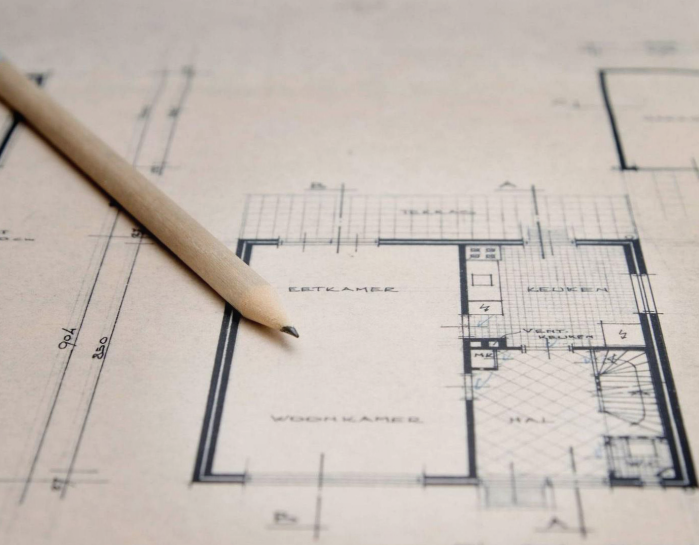




HOSPITALITY HOUSE

FOOD  
BEVERAGE  
AND  
EVERYTHING  
IN  
BETWEEN



---

WE PROVIDE FOOD AND BEVERAGE  
STRATEGY, SUPPORT, AND REAL ESTATE  
SERVICES THROUGHOUT NORTH AMERICA

---

Founded in 2001 by Steven Kamali,

Hospitality House was created with the intent of providing Food + Beverage solutions to the Hospitality and Real Estate communities.

**O**UR CULTURE THRIVES ON A PASSION FOR FOOD + BEVERAGE, WHICH IS INTEGRATED INTO A DISCIPLINED BUSINESS APPROACH. THUS, WE HAVE GAINED OUR CLIENT'S TRUST RESULTING IN NUMEROUS SUCCESSFUL PROJECTS.

HEADQUARTERED IN NEW YORK CITY, WE SERVICE ALL AREAS OF THE HOSPITALITY COMMUNITY INCLUDING REITS, PRIVATE EQUITY FIRMS, HEDGEFUNDS, HOTEL MANAGERS, AND OWNERS/DEVELOPERS.

WHETHER MASTER PLANNING A MIXED-USE DEVELOPMENT, FINANCIAL UNDERWRITING OF A PROPOSED RESTAURANT VENUE, DEVELOPING AN INNOVATIVE DINING CONCEPT, OR SOURCING THIRD PARTY OPERATORS, OUR COMPREHENSIVE INDUSTRY EXPERTISE AND DIVERSE BACKGROUND ALLOW US TO PROVIDE THOUGHTFUL AND UNIQUE PERSPECTIVES TO OUR CLIENTS, ASSISTING THEM IN A VARIETY OF ENDEAVORS WITHIN THE CULINARY SPACE.

# SERVICES



**SPATIAL  
PLANNING**



**FINANCIAL  
ANALYSIS**



**PROGRAM  
DEVELOPMENT**



**MARKET  
STUDY**

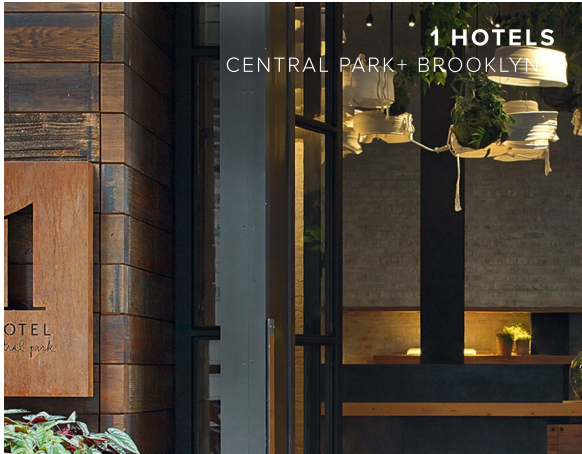
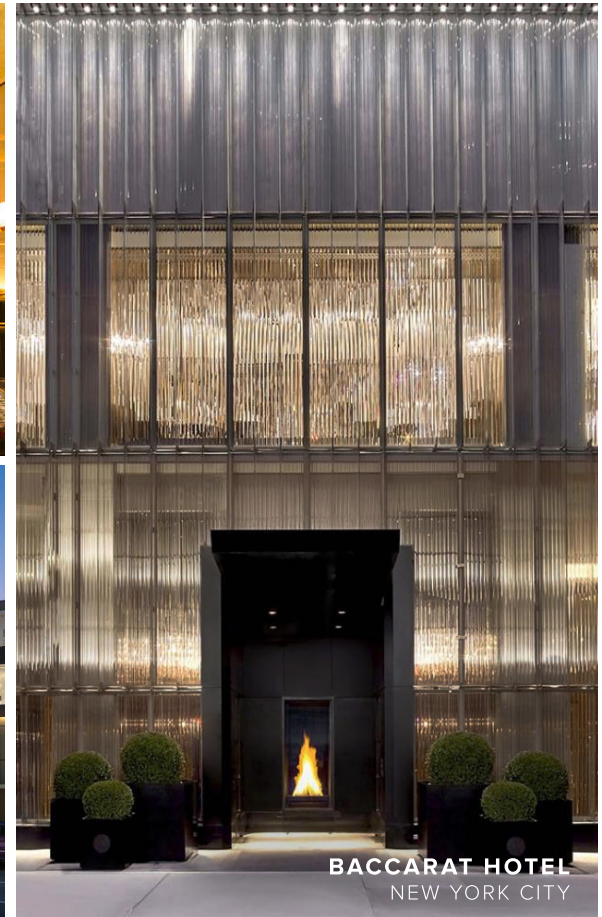
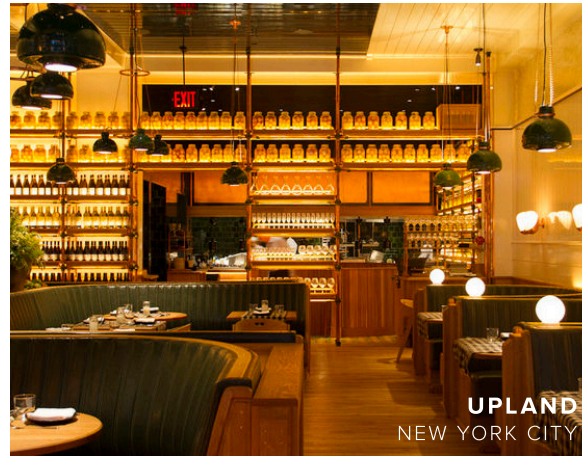


**OPERATOR  
SOURCING**

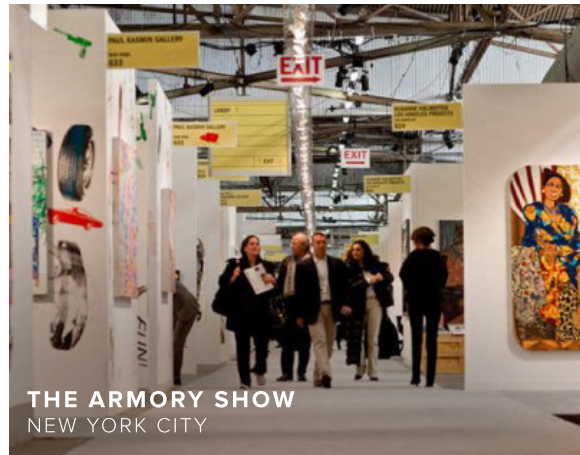
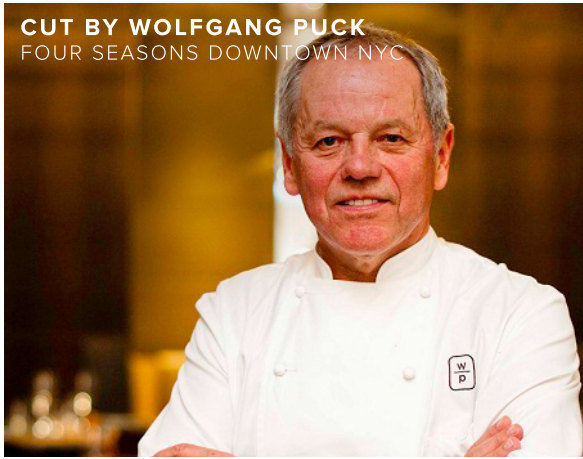


**CONTRACT  
ADVISORY**

# HIGHLIGHTED PROJECTS



# HIGHLIGHTED PROJECTS





# CLIENTS

Baccarat



CIM

EQUINOX

Fairmont  
HOTELS & RESORTS

FOREST CITY RATNER  
COMPANIES



MEADOW  
PARTNERS



FOUR SEASONS  
*Hotels and Resorts*



HAMPSHIRE  
BRAND, HOTEL & ASSET MANAGEMENT



Marriott



Hilton

HYATT

LIGHTSTONE

moxy



MILLENNIUM  
HOTELS AND RESORTS

OXFORD CAPITAL



RELATED

RFR



THE RITZ-CARLTON®

ROCKPOINT®  
GROUP

ROCKBRIDGE

SILVERSTEIN  
PROPERTIES

SOFITEL  
HOTELS & RESORTS



THOMPSON HOTELS



TRIUMPH  
HOTELS.



WALTON ST  
CAPITAL

WESTBROOK PARTNERS

# THE TEAM



**STEVEN KAMALI**  
CHIEF EXECUTIVE OFFICER



**NICOLE LEVINSON**  
CHIEF OPERATING OFFICER



**KARMA MCDERMOTT**  
FOUNDING PARTNER



**ALEXIS LENHART**  
MANAGING DIRECTOR



**SHANE DAVIS**  
DIRECTOR  
STRATEGY + DEVELOPMENT



**ELIZABETH RAOUFI**  
DIRECTOR OF FINANCE



**KELLY ESFORMES ALVAREZ**  
ART DIRECTOR



**CATHY ARONIN**  
ASSOCIATE  
STRATEGY + DEVELOPMENT



**MARLEE BIRNBERG**  
ANALYST



**RYAN ERENSTEIN**  
ASSOCIATE



**CHANDRA HENDERSON**  
DIRECTOR



**SAM MARTORELLA**  
ASSOCIATE



**ALISSA POLOUMIEVA**  
SENIOR ASSOCIATE



**JORDAN RAHIMI**  
ASSOCIATE



**ZOHAR SCHEINMAN**  
DIRECTOR



**ANISIA TIERNEY**  
EXECUTIVE COORDINATOR



**CAROLYN VAHEY**  
ASSOCIATE



**NEW YORK**  
**275 MADISON AVENUE**  
**NEW YORK, NY 10016**  
**+1 (212) 684-6666**